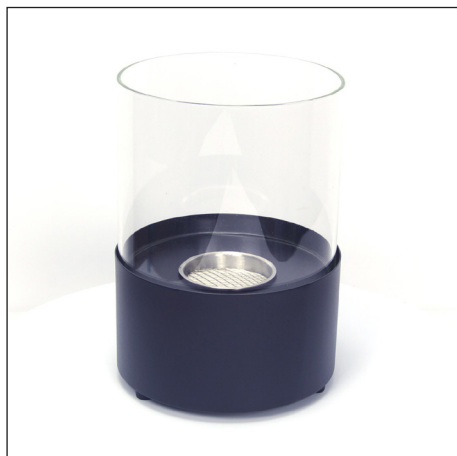


BIO-20-248

Round Tabletop Bioethanol Fireplace



Picture



Technical Specifications

Fireplace type	Tabletop bioethanol fireplace
Fuel	Bioethanol, max. 96.6% alcohol
Weight	3 kg
Materials	Steel and Glass
Size	Height: 270 x Diameter: 200 mm
Colour	Black
Burner type	Manual
Capacity	0.5 liters
Adjustable flame	No
Burn time	Up to 2 hours
Requires electricity	No
Heat effect	1.08 kW/h